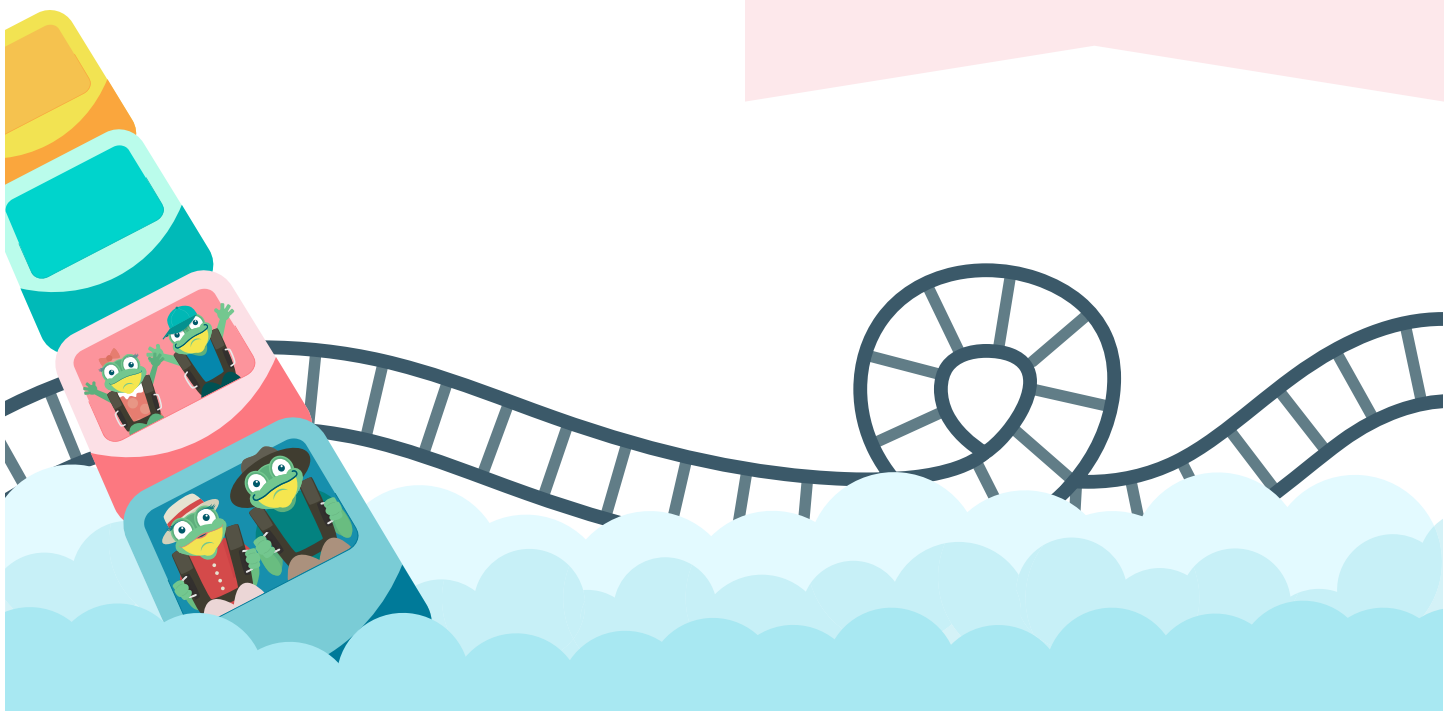


Disneyland® Resort

Disneyland® Resort is called the Happiest Place on Earth® for good reason! The original Disney Theme Park is full of nostalgia, wonder and, of course, magic around every corner. If you're planning a *Disneyland®* Resort vacation, you're in for a *toadally* incredible time! But you may have some questions as you begin to plan. How long should you visit? Where should you stay? Which rides are best for you and your family? What is Disney Genie+ service and how does it work? We're *hoppy* to help! In this Jump Start Guide, we'll answer these questions (and more), as well as pointing you toward some helpful resources so you're ready to go. Let's *jump* in!

Intro.....	1
Park Overview.....	2
Popular Rides and Attractions by Park.....	4
Ticket Types.....	8
Where to Stay.....	9
Where to Eat.....	11
Skip the Lines with Disney Genie+ Service.....	12
When to Book and Important Dates.....	13
Tips and Tricks.....	14
Learn More.....	15



PARK OVERVIEW

Disneyland® Resort is made up of two theme parks, one entertainment district and three on-site hotels. Here's what you can expect at each of them!

Disneyland® Park

As Walt Disney said on *Disneyland®* Park's opening day in 1955, "To all who come to this happy place: Welcome!" Then, and now, dreamers of all ages can explore the hub-and-spoke into *Fantasyland®* Area, *Frontierland®* Area, *Adventureland®* Area and *Tomorrowland®* Area. With the beautiful Sleeping Beauty Castle at its center, *Disneyland®* Park plays host to opening day attractions such as the *Disneyland®* Railroad and *Jungle Cruise®* Attraction, as well as new attractions such as Star Wars: Rise of the Resistance and Mickey & Minnie's Runaway Railway.

BEST FOR:

Dreamers of all ages, especially tadpoles

MOST POPULAR RIDES:

Pirates of the Caribbean® Attraction
Haunted Mansion® Attraction
Matterhorn Bobsleds® Attraction
Star Wars: Rise of the Resistance
Indiana Jones® Adventure Attraction

EXPERIENCES:

Bibbidi Bobbidi Boutique 💰
Droid Depot 💰
Savi's Workshop 💰

SEASONAL EVENTS:

Disneyland® After Dark Events 💰
Halloween Time
Holidays at the *Disneyland®* Resort

💰 Additional fee or separately ticketed event



Hop [here](#) to learn more!

Visit UndercoverTourist.com for discounts on theme park tickets, hotels and more!

UNDERCOVER TOURIST®

2

PARK OVERVIEW

Disneyland® Resort is made up of two theme parks, one entertainment district and three on-site hotels. Here's what you can expect at each of them!

Disney California Adventure® Park

Disney California Adventure® Park is — well — an adventure around California! You'll find yourself navigating landscapes similar to the iconic wharfs, peaks, rivers and deserts that make up the Golden State. You'll find *Cars Land*® Area, Avengers Campus, Pixar Pier and more in this thrilling park.

BEST FOR:

Adventurers of all ages, plus “Cars” and Marvel fans, tweens, teens and adults

MOST POPULAR RIDES:

Radiator Springs Racers® Attraction

Incredicoaster®

Guardians of the Galaxy — Mission: BREAKOUT!

Toy Story Midway Mania! Attraction inspired by the Disney•Pixar Toy Story films

Soarin' Around the World® Attraction

EXPERIENCES:

Animation Academy

Mickey's PhilharMagic

Redwood Creek Challenge Trail® Attraction

SEASONAL EVENTS:

Disneyland® After Dark Events 💰

Oogie Boogie Bash 💰

Festival of Holidays

DCA Food and Wine Festival

Lunar New Year

Downtown Disney® District

This special district that sits between the Disneyland® hotels and the theme parks offers up restaurants, shops and special entertainment. It's free to get in, making it a perfect non-park day activity.



💰 Additional fee or separately ticketed event

Hop [here](#) to learn more!

Visit [UndercoverTourist.com](https://www.undercovertourist.com) for discounts on theme park tickets, hotels and more!

UNDERCOVER TOURIST®

3

POPULAR RIDES AND ATTRACTIONS BY PARK

With so much fun in store, it can be challenging to narrow down exactly what to do and see while you're in the Happiest Place on Earth®. Don't worry — we've got you covered! Here is a complete list of the rides and experiences available in each park, plus information on height requirements, kid favorites and more.

Disneyland® Park Attractions

- Alice in Wonderland
- Astro Orbitor
- *Autopia*® Attraction powered by Honda - 32" + 🌱
- *Big Thunder Mountain Railroad*® Attraction - 40" + 🌱
- *Buzz Lightyear Astro Blasters*® Attraction + 🌱
inspired by Disney•Pixar's Toy Story 2
- Casey Jr. Circus Train 🌱
- Chip 'n' Dale's GADGETcoaster 🌱
- Davy Crockett's Explorer Canoes
- *Disneyland*® Railroad 🌱
- *Dumbo the Flying Elephant*® Attraction 🌱
- *Finding Nemo Submarine Voyage*® Attraction
inspired by Disney•Pixar's Finding Nemo 🌱
- *Haunted Mansion*® Attraction +
- *Indiana Jones*® Adventure Attraction - 46" +
- *it's a small world*® Attraction + 🌱
- *Jungle Cruise*® Attraction 🌱
- King Arthur Carrousel 🌱
- Mad Tea Party 🌱
- The Many Adventures of *Winnie the Pooh*® Attraction 🌱
- Mark Twain Riverboat
- *Matterhorn Bobsleds*® Attraction - 42" + 1



Offers Genie+



Individual Lightning Lane Selection



Single Rider Line



Tadpole Favorite

Ready to make a plan for your day? Check out our pre-made park plans or customize your own in the Undercover Tourist Theme Park Day App!

Haven't heard about Genie+ or Individual Lightning Lanes? Don't worry! Hop to "Skip the Lines" to learn more.

Rider Switch service is available at all attractions with a height requirement in *Disneyland*® Park and *Disney California Adventure*® Park.

Hop [here](#) to learn more!

Visit [UndercoverTourist.com](https://www.undercovertourist.com) for discounts on theme park tickets, hotels and more!

UNDERCOVER TOURIST®

4

POPULAR RIDES AND ATTRACTIONS BY PARK

With so much fun in store, it can be challenging to narrow down exactly what to do and see while you're in the Happiest Place on Earth®. Don't worry — we've got you covered! Here is a complete list of the rides and experiences available in each park, plus information on height requirements, kid favorites and more.

Disneyland® Park Attractions

- Mickey & Minnie's Runaway Railway ⚡ 🌱
- Millennium Falcon: Smugglers Run + 1
- *Mr. Toad's Wild Ride*® Attraction
- *Peter Pan's Flight*® Attraction 🌱
- Pinocchio's Daring Journey
- *Pirates of the Caribbean*® Attraction
- Roger Rabbit's Car Toon Spin +
- *Snow White's Enchanted Wish*® Attraction 🌱
- Storybook Land Canal Boats
- *Space Mountain*® Attraction - 40" + 1
- *Star Tours*® — The Adventures Continue Attraction
©Disney/Lucasfilm, Ltd. - 40" +
- Star Wars: Rise of the Resistance - 40" ⚡

- + Offers Genie+
- ⚡ Individual Lightning Lane Selection
- 1 Single Rider Line
- 🌱 Tadpole Favorite

Ready to make a plan for your day? Check out our pre-made park plans or customize your own in the Undercover Tourist Theme Park Day App!

Haven't heard about Genie+ or Individual Lightning Lanes? Don't worry! Hop to "Skip the Lines" to learn more.

Rider Switch service is available at all attractions with a height requirement in *Disneyland*® Park and *Disney California Adventure*® Park.

Shows and Entertainment

- "Magic Happens" Parade 🌱
- Fireworks/Projection Show 🌱
- Storytelling at Royal Theatre 🌱
- Tale of the Lion King
- *it's a small world*® Encanto Projection
- *Disneyland*® Band
- *Tomorrowland*® Dance Parties with characters (seasonal)

Hop [here](#) to learn more!

Visit [UndercoverTourist.com](https://www.undercovertourist.com) for discounts on theme park tickets, hotels and more!

UNDERCOVER TOURIST®

5

POPULAR RIDES AND ATTRACTIONS BY PARK

With so much fun in store, it can be challenging to narrow down exactly what to do and see while you're in the Happiest Place on Earth®. Don't worry — we've got you covered! Here is a complete list of the rides and experiences available in each park, plus information on height requirements, kid favorites and more.

Disney California Adventure® Park Attractions

- **Guardians of the Galaxy — Mission: BREAKOUT!** - 40" 
- **Golden Zephyr®** Attraction 
- **Goofy's Sky School** - 42"   
- **Grizzly River Run** - 42"  
- **Incredicoaster®** - 48"  
- **Inside Out Emotional Whirlwind** 
- **Jessie's Critter Carousel** 
- **Jumpin' Jellyfish®** Attraction - 40" 
- **The Little Mermaid — Ariel's Undersea Adventure**  
- **Luigi's Rollickin' Roadsters®** Attraction - 32" 
- **Mater's Junkyard Jamboree®** Attraction - 32" 
- **Monsters, Inc. Mike & Sulley to the Rescue®** Attraction inspired by Disney•Pixar's Monsters, Inc.  
- **Pixar Pal-A-Round**
- **Radiator Springs Racers®** Attraction - 40"   
- **Redwood Creek Challenge Trail®** Attraction: Cliff Hanger Traverse Rock Climb - 42"
- **Redwood Creek Challenge Trail®** Attraction: Hoot n' Holler Log Slides - 32"
- **Redwood Creek Challenge Trail®** Attraction: Sequoia Smokejumpers Training Zip Line - 42"-63" and under 13 years old



Offers Genie+



Individual Lightning Lane Selection



Single Rider Line



Tadpole Favorite

Ready to make a plan for your day? Check out our pre-made park plans or customize your own in the Undercover Tourist Theme Park Day App!

Haven't heard about Genie+ or Individual Lightning Lanes? Don't worry! Hop to "Skip the Lines" to learn more.

Rider Switch service is available at all attractions with a height requirement in Disneyland® Park and Disney California Adventure® Park.

Hop [here](#) to learn more!

Visit [UndercoverTourist.com](https://www.undercovertourist.com) for discounts on theme park tickets, hotels and more!

UNDERCOVER TOURIST®

6

POPULAR RIDES AND ATTRACTIONS BY PARK

With so much fun in store, it can be challenging to narrow down exactly what to do and see while you're in the Happiest Place on Earth®. Don't worry — we've got you covered! Here is a complete list of the rides and experiences available in each park, plus information on height requirements, kid favorites and more.

Disney California Adventure® Park Attractions

- **Silly Symphony Swings® Attraction (single swings)**
- **Silly Symphony Swings® Attraction (tandem swings) - 40"**
- **Soarin' Around the World® Attraction - 40"** + 1
- **Toy Story Midway Mania! Attraction inspired by Disney•Pixar's Toy Story films** +
- **WEB SLINGERS: A Spider-Man Adventure** + 1

- + Offers Genie+
- ⚡ Individual Lightning Lane Selection
- 1 Single Rider Line
- 🐸 Tadpole Favorite

Ready to make a plan for your day? Check out our pre-made park plans or customize your own in the Undercover Tourist Theme Park Day App!

Haven't heard about Genie+ or Individual Lightning Lanes? Don't worry! Hop to "Skip the Lines" to learn more.

Rider Switch service is available at all attractions with a height requirement in Disneyland® Park and Disney California Adventure® Park.

Shows and Entertainment

- **World of Color**
- **Disney Junior Dance Party** 🐸
- **Avengers Assemble!**
- **Dr. Strange: Mysteries of the Mystic Arts**
- **Guardians of the Galaxy: Awesome Dance Off!**
- **The Amazing Spider-Man!** 🐸
- **Warriors of Wakanda: The Disciplines of the Dora Milaje**
- **Operation: Play Time! – Featuring the Green Army Patrol**

Hop [here](#) to learn more!

Visit [UndercoverTourist.com](https://www.undercovertourist.com) for discounts on theme park tickets, hotels and more!

UNDERCOVER TOURIST®

7

TICKET TYPES

With several ticket options, there's something right for everyone! In our experience, most families visiting Anaheim or the Los Angeles area stay between four and six days and opt for **2- to 5-day tickets**.

Base

One park per day, no *hopping*

BEST FOR:

First-timers or those with young tadpoles

Park Hopper®

Same-day access to both theme parks.

One of the most wonderful things about *Disneyland*® Resort is how close together the theme parks are! *Disneyland*® Park and *Disney California Adventure*® Park are a short walk away from one another across the esplanade. Because the parks are so close together, we highly recommend park hopper tickets for your visit.

Disney Genie+ Service

Add on Disney Genie+ service to either ticket type to save time waiting in line! Choose the next available time to arrive at a variety of attractions and experiences using the Lightning Lane entrance. You can save some *green* by purchasing Disney Genie+ service in advance, since pricing is otherwise variable by date.

Make Your Theme Park Reservation

All guests visiting *Disneyland*® Resort must make a theme park reservation, which can be made through the Disneyland app or website. Reservations can be made up to 180 days in advance. If you are park hopping, you only need to reserve the first park you wish to enter. At 11 a.m., you can *hop* to the other park.



Don't forget: Undercover Tourist offers a 365-day refund policy on *Disneyland*® Resort tickets!

Hop to "Skip the Lines" to learn more about Genie+ and Individual Lightning Lanes.

Hop [here](#) to learn more!

Visit [UndercoverTourist.com](https://www.undercovertourist.com) for discounts on theme park tickets, hotels and more!

UNDERCOVER TOURIST®

8

WHERE TO STAY

Each of these resorts are within walking distance of the parks, or offer the *Disneyland*® Monorail in the *Downtown Disney*® District to *Disneyland*® Park. The three hotels of *Disneyland*® Resort also offer the early theme park entry benefit.

THERE ARE THREE ON-SITE HOTELS AT *DISNEYLAND*® RESORT:

Disneyland® Hotel

The original on-site hotel, this tropical getaway opened with *Disneyland*® Resort and pays homage to its opening day with buildings themed to *Fantasyland*® Area, *Frontierland*® Area and *Adventureland*® Area.

What We Love:

- The monorail slide at the pool
- *Trader Sam's Enchanted Tiki Bar*®
- Light-up headboards

Disney's Grand Californian Hotel® & Spa

Step into the serene woodland vibes at this hotel, with its own separate entrance into *Disney California Adventure*® Park

What We Love:

- Mickey's Tales of Adventure Breakfast Buffet at Storytellers Café
- Option for theme park views
- Three pools, including a leisure pool, a turtle fountain and a 90-foot-long waterslide — something for every member of the family

Pixar Place® Hotel

Enter the beloved world of Pixar, with touches throughout from your favorite films and modern flair

What We Love:

- Fireworks views from the pool deck
- Family play court to get the wiggles out, plus character-inspired firepits to warm those SoCal nights
- "Finding Nemo" inspired water play area, including a waterslide featuring Crush and a splash pad with Hank
- Dedicated entrance to *Disney California Adventure*® Park



WHERE TO STAY

ALL ON-SITE GUESTS OF THE THREE *DISNEYLAND*® RESORT HOTELS RECEIVE THE FOLLOWING BENEFITS

(even when booking through Undercover Tourist):

Immersive theming. Each of the *Disneyland*® hotels has its own unique theme, keeping you in the magic throughout your stay.

Convenient location. All *Disneyland*® hotels are within walking distance of the theme parks, *Downtown Disney*® District and each other. You have short waits to get through security, and you have no stress about parking each day. It's easy to *hop* back to the hotel for pool time, dining or a nap.

Early Theme Park Entry. Hotel guests can enter either theme park (with a theme park reservation, of course) 30 minutes before park opening. Guests with early entry can access select attractions, dining and shopping locations during that time.

Better theme park reservation availability. Follow this link to see the theme park availability for *Disneyland*® hotel guests compared to other guests.

Preferred dining access. *Disneyland*® hotel guests have special access to a limited number of reservations at select hotel table-service restaurants during the dates of the hotel stay.



Not sure that you want to stay on-site? One thing we love about *Disneyland*® Resort is the variety of hotel options! There are lots of off-site hotels that are still within walking or shuttle distance that Undercover Tourist can save you some *green* on. Some even offer free breakfast, special kids' play areas and more!

Hop here to learn more!

Visit UndercoverTourist.com for discounts on theme park tickets, hotels and more!

UNDERCOVER TOURIST®

10

WHERE TO EAT

There are SO many delicious dining options at *Disneyland*® Resort! It's true that things taste better when they're Mickey-shaped. Here are a few of our favorite food spots.



Disneyland® Park

- Jolly Holiday Bakery Cafe 📱
- Plaza Inn 📱 🍷 🍷
- Café Daisy 📱 🍷
- Café Orleans
- Blue Bayou Restaurant 🍷

Disney California Adventure® Park

- Lamplight Lounge
- Pacific Wharf Cafe ⌚
- Pym Test Kitchen featuring IMPOSSIBLE™ 🍷 ⌚
- Cocina Cucamonga Mexican Grill
- Carthay Circle Restaurant 🍷

Downtown Disney® District

- Earl of Sandwich 🍷 ⌚
- Black Tap Craft Burgers & Shakes 🍷 ⌚
- Naples Ristorante e Bar
- Ballast Point Brewing Company
- Beignets Expressed 🍷 ⌚

When to Reserve

Since there are fewer table-service restaurants at *Disneyland*® Resort than *Walt Disney World*® Resort, getting advance dining reservations is less of a big-time affair. Table-service reservations can be made up to 60 days in advance of your trip. You can also check for walk-up availability same-day.

The Hotels of *Disneyland*® Resort

- Storytellers Café at *Disney's Grand Californian Hotel*® & Spa 🍷
- GCH Craftsman Grill at *Disney's Grand Californian Hotel*® & Spa 📱 ⌚
- Grand Californian Great Hall Cart at *Disney's Grand Californian Hotel*® & Spa ⌚
- Tangaroa Terrace Tropical Bar and Grill at *Disneyland*® Hotel 📱 ⌚
- Goofy's Kitchen at *Disneyland*® Hotel 🍷



Mobile Order is a popular option at *Disneyland*® Resort. Place your food order in advance in the *Disneyland*® app and skip the line at popular quick-service restaurants.



Character Dining



Tadpole Pick



Fine Dining



Quick Service

Hop [here](#) to learn more!

Visit [UndercoverTourist.com](https://www.undercovertourist.com) for discounts on theme park tickets, hotels and more!

UNDERCOVER TOURIST®

11

DISNEY GENIE+ SERVICE

A faster way to get to your favorite rides has debuted at *Disneyland*® Resort! This optional, paid service can be purchased in advance with your tickets, or same day within the Disneyland app. Select popular attractions can be purchased a la carte — these are called individual Lightning Lane selections, and they come at a separate cost from Disney Genie+ service.



See which rides are included on the "Popular Rides and Attractions by Park" pages

1

SKIP THE LINE

Disney Genie+ service replaces FASTPASS as the new way to skip the wait. Starting at \$25 per person, per day, guests can enjoy one-time expedited access to many popular attractions and experiences. Plus, Disney Genie+ service comes with unlimited *Disney PhotoPass*® digital downloads from the day!

2

CHOOSE YOUR QUEUE

Lightning Lane is the name of the queue you enter for expedited access using Disney Genie+ service. Standby lines remain available for all rides.



3

USE THE APP

Reserve rides and experiences through the Disneyland app. Guests can make reservations for a party of up to 10 people.



4

SET YOUR ALARM

All guests may reserve their first selection upon entering a *Disneyland*® Theme Park. After that, you can reserve another ride every 2 hours, or after scanning in for your most recently booked reservation — whichever comes first.



WHEN TO BOOK

Mark your calendar for some important dates to keep in mind as you plan your vacation, including when to book tickets, make dining reservations and more.

Use our **#1 ranked crowd calendar** to choose the best time to visit *Disneyland*® Resort for your family!

You can also download our [SoCal Theme Park Day](#) app to see Crowd Calendar and ticket prices for each day of your trip



365
DAYS OUT

- Book your *Disneyland*® Resort [hotel](#)
- Research Disney Genie+ service to see if you'd like to save by purchasing tickets with Disney Genie+ service already loaded and ready for your trip
- Buy your [theme park tickets](#) in advance to save on gate pricing
- Consider transportation options to and around the resort. Don't forget that Undercover Tourist has *hoppin'* deals on [rental cars](#)!



180
DAYS OUT

- Make your [theme park reservations](#) in the Disneyland app
- Research rides on our [YouTube channel](#)

60
DAYS OUT

- Make dining reservations for table-service restaurants
- Reserve special experiences, such as [Bibbidi Bobbidi Boutique](#), [Savi's Workshop](#) and [Droid Depot](#)



30
DAYS OUT

- Request [Disability Access Service](#), if needed

7
DAYS OUT

- Get the scoop on [mobile ordering](#)
- Use your research and Undercover Tourist's tools to plan your best vacay day!
- Prepare for Los Angeles weather so you know [what to pack](#)

3
DAYS OUT

- Download our [SoCal Theme Park Day](#) app to see wait times and create your own customizable park plans



Hop [here](#) to learn more!

Visit [UndercoverTourist.com](#) for discounts on theme park tickets, hotels and more!

UNDERCOVER TOURIST®

13

TIPS AND TRICKS

Here are our top tips and tricks for making the very most of your time at *Disneyland*® Resort!

Decide in advance where you want to go. Use our list of attractions so you can decide what your priorities are for each park. Make planning your trip a family affair, and let everyone pick a couple of rides that are must-dos.

Pick the best day to visit. Use our Crowd Calendar to identify the best dates to visit *Disneyland*® Resort.

Download our SoCal Theme Park Day app. It offers key showtimes, crowd levels, wait times and the optimal time to visit each attraction.

Utilize on-site perks. If you're staying at a *Disneyland*® Resort hotel, you can enter either of the theme parks 30 minutes early on each day of your stay (theme park reservation and valid admission required).

Arrive before the parks open. The first few hours are the least busy times in the park, and you can experience a lot more when crowds are low.

Consider Disney Genie+ service.

This paid service enables guests to wait in an expedited line for popular attractions. If you are purchasing same-day, know that the price varies by date and must be purchased on the day of your visit through the Disneyland app for each member of your party. You may make your first Disney Genie+ reservation once you enter a theme park. Remember, this service is *toadally* optional and all attractions still have a free means of entry via the standby line.

Experience the most popular rides with the lowest durations first. You can follow one of our park plans or customize your own. If you aren't a family of early risers or you want more flexibility than a park plan offers, use our general map to decide which rides to visit at any given time.

Take a break in the middle of the day. Especially if you've got young tadpoles, we suggest taking a break in the afternoon and then coming back in the evening for the parade and fireworks or nighttime shows.



Hop [here](#) to learn more!

Visit [UndercoverTourist.com](https://www.UndercoverTourist.com) for discounts on theme park tickets, hotels and more!

UNDERCOVER TOURIST®

14

LEARN MORE!

Check Out Our Most Popular Blog Posts

- ✦ [Best Times to Visit Disneyland® Resort](#)
- ✦ [Answering Your Frequently Asked Questions About Disney Genie+ Service](#)
- ✦ [Disneyland® Resort Refurbishment Schedule and Ride Closures](#)
- ✦ [How to Maximize Your Time at Disneyland® Resort](#)

Plan Your Trip And Customize Your Park Days with Our FREE Apps!



SoCal Theme Park Day

Headed to the park soon? Maximize your time with our park plans. Plus, view ride wait times and crowd levels!

- ✦ See live wait times and crowd levels
- ✦ Preview rides with in-app videos and helpful details such as height requirements
- ✦ View and customize park plans to maximize your time in the park

[Click here to learn more!](#)



NEW!

Theme Park Vacation Planner

Just getting started on your vacation planning? Answer a few simple questions about your trip to receive a personalized budget, itinerary and curated content!

- ✦ Plan your next vacation all in one spot!
- ✦ Get expert planning advice
- ✦ Set your vacation budget, including real-time ticket, hotel and rental car costs by date

[Click here to learn more!](#)

Hop Along with Us on Social!



@undercvertourist



@undercvertourist



@theparkfrog



@theparkfrog



@undercvertourist

Stay in-the-Know



Listen to our Expert Disney Planning Tips podcast



Sign up for our newsletter



Sign up for texts